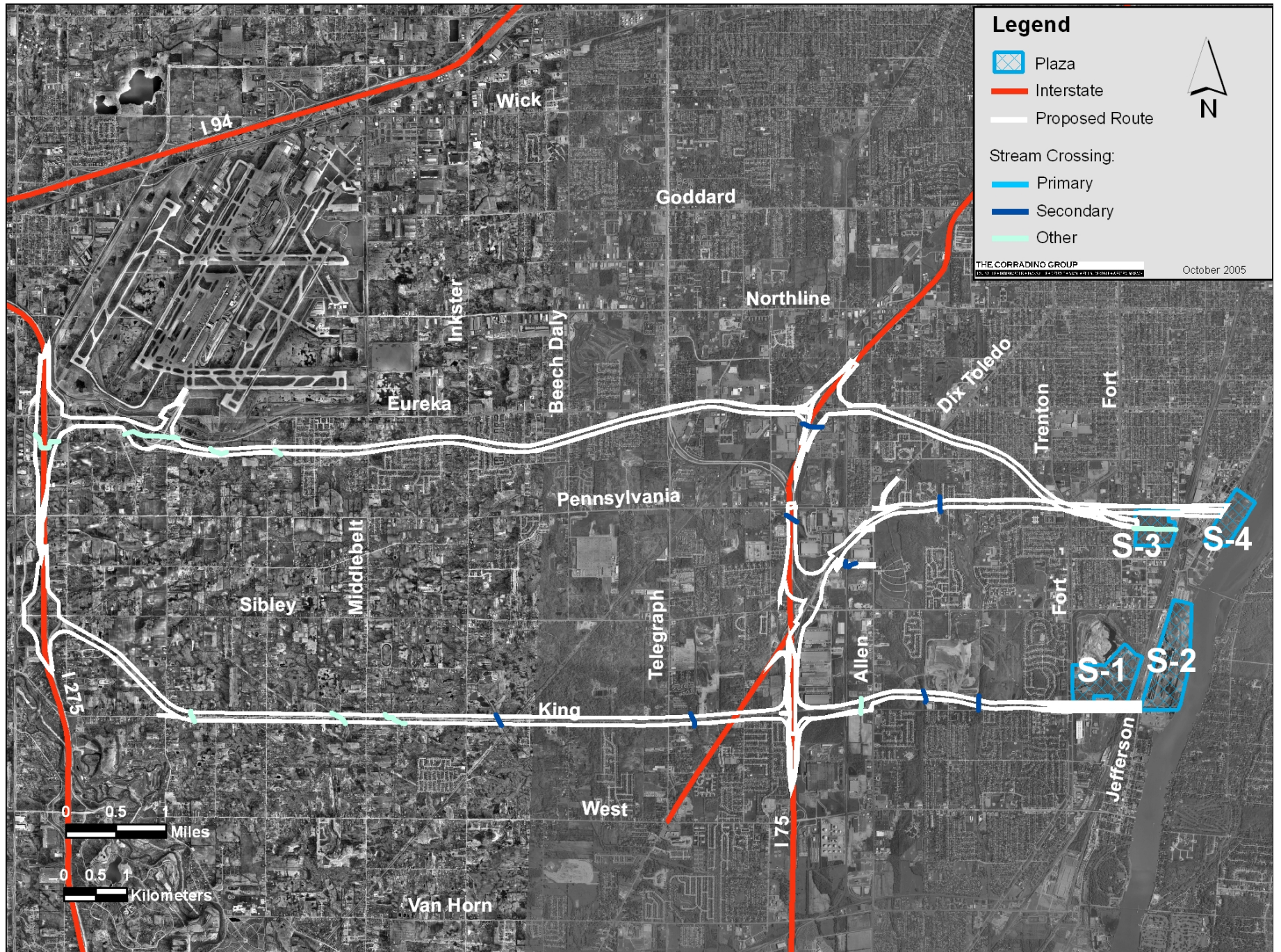
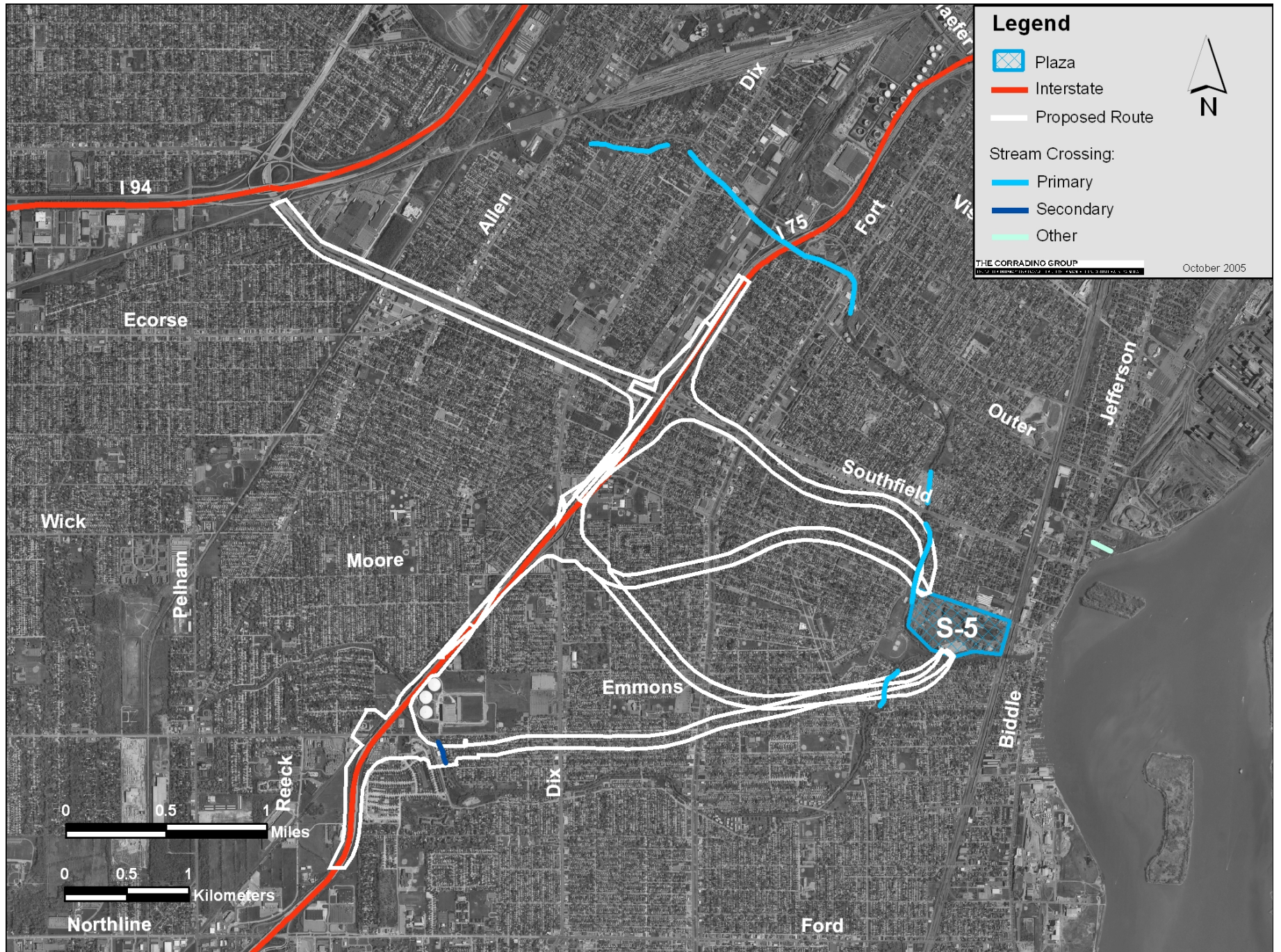

Streams and Water Crossings

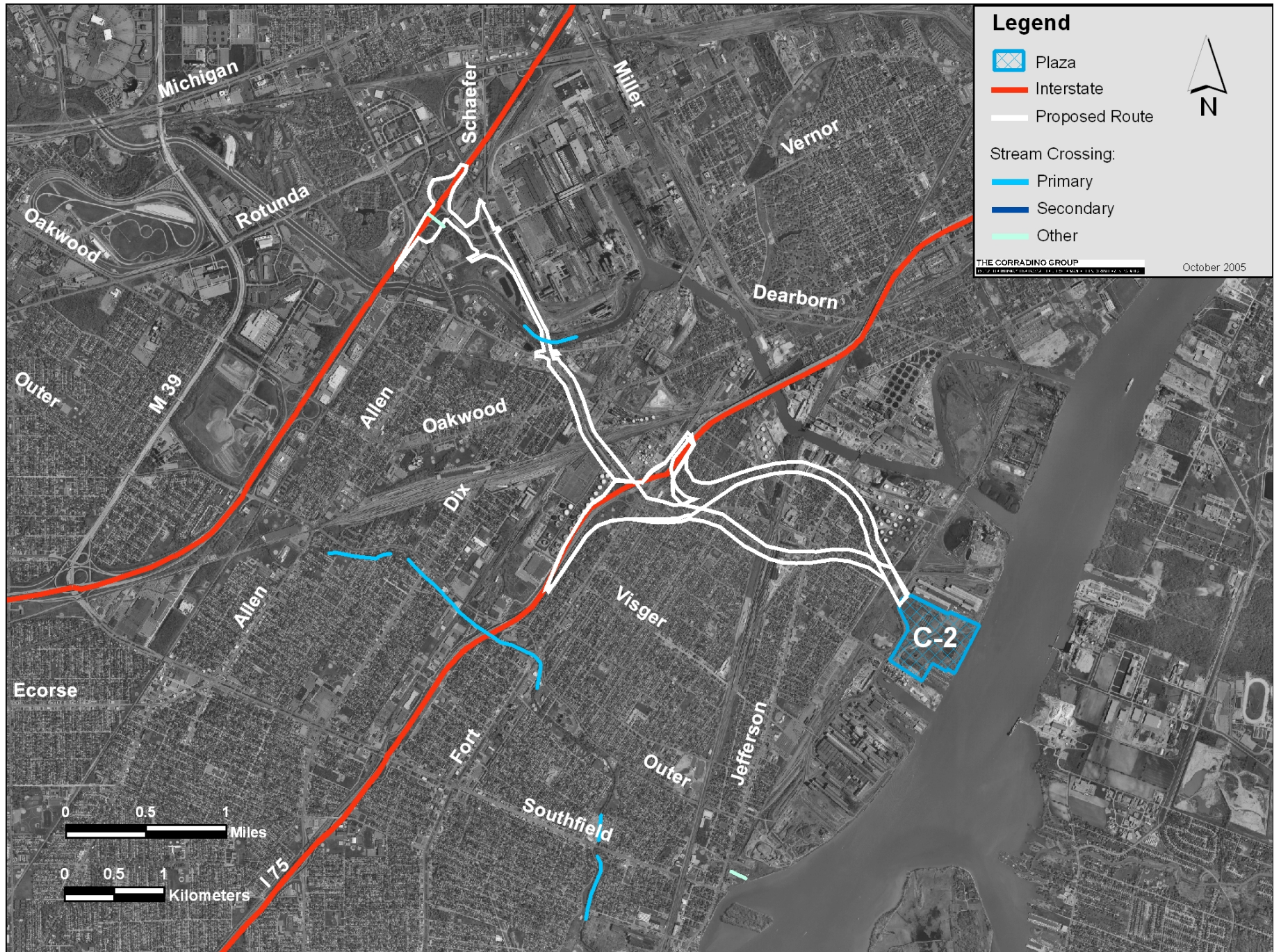
Streams and Other Water Crossings S-1 through S-4



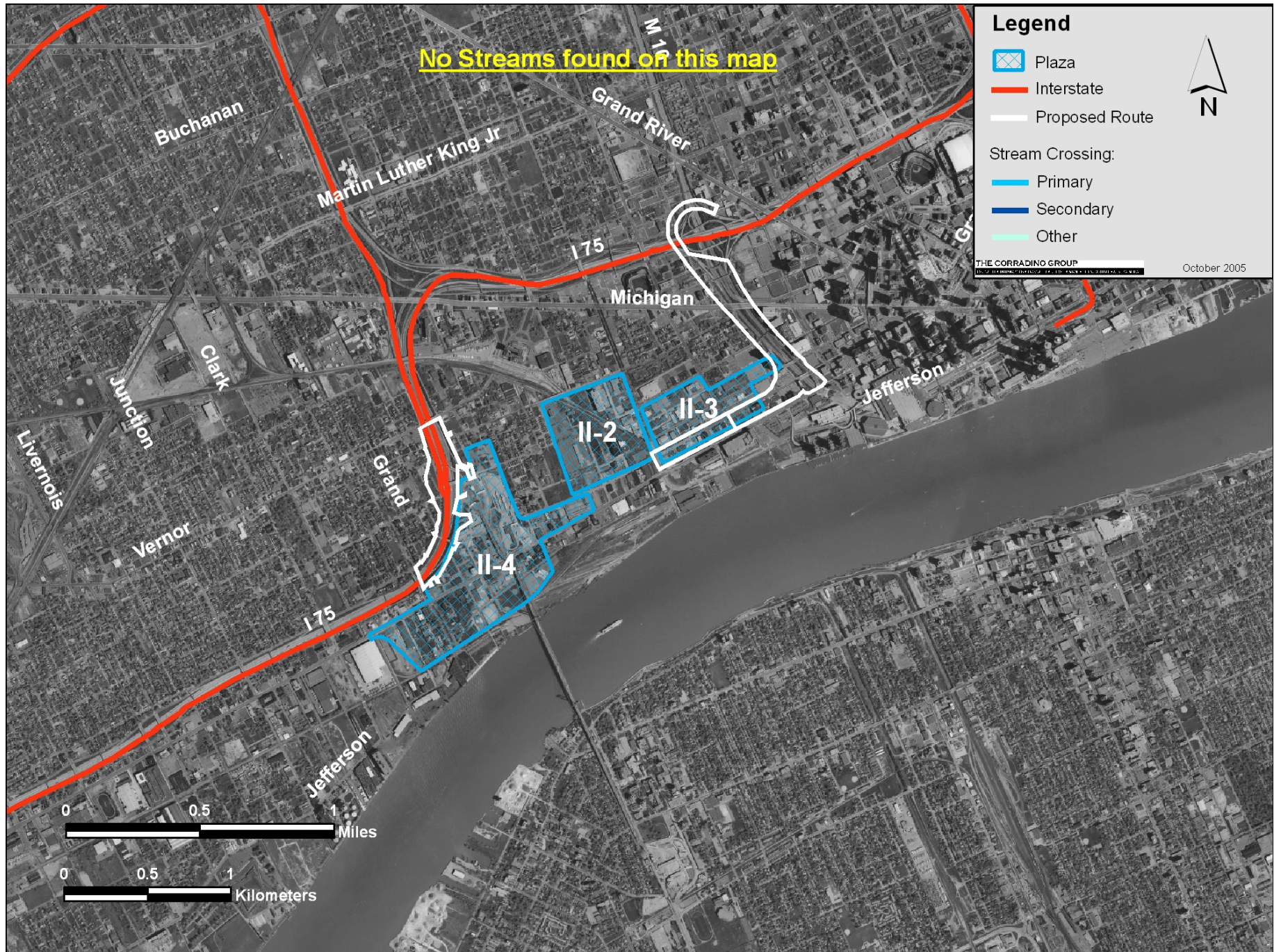
Streams and Other Water Crossings S-5



Streams and Other Water Crossings C-2



Streams and Other Water Crossings
II-2 through II-4

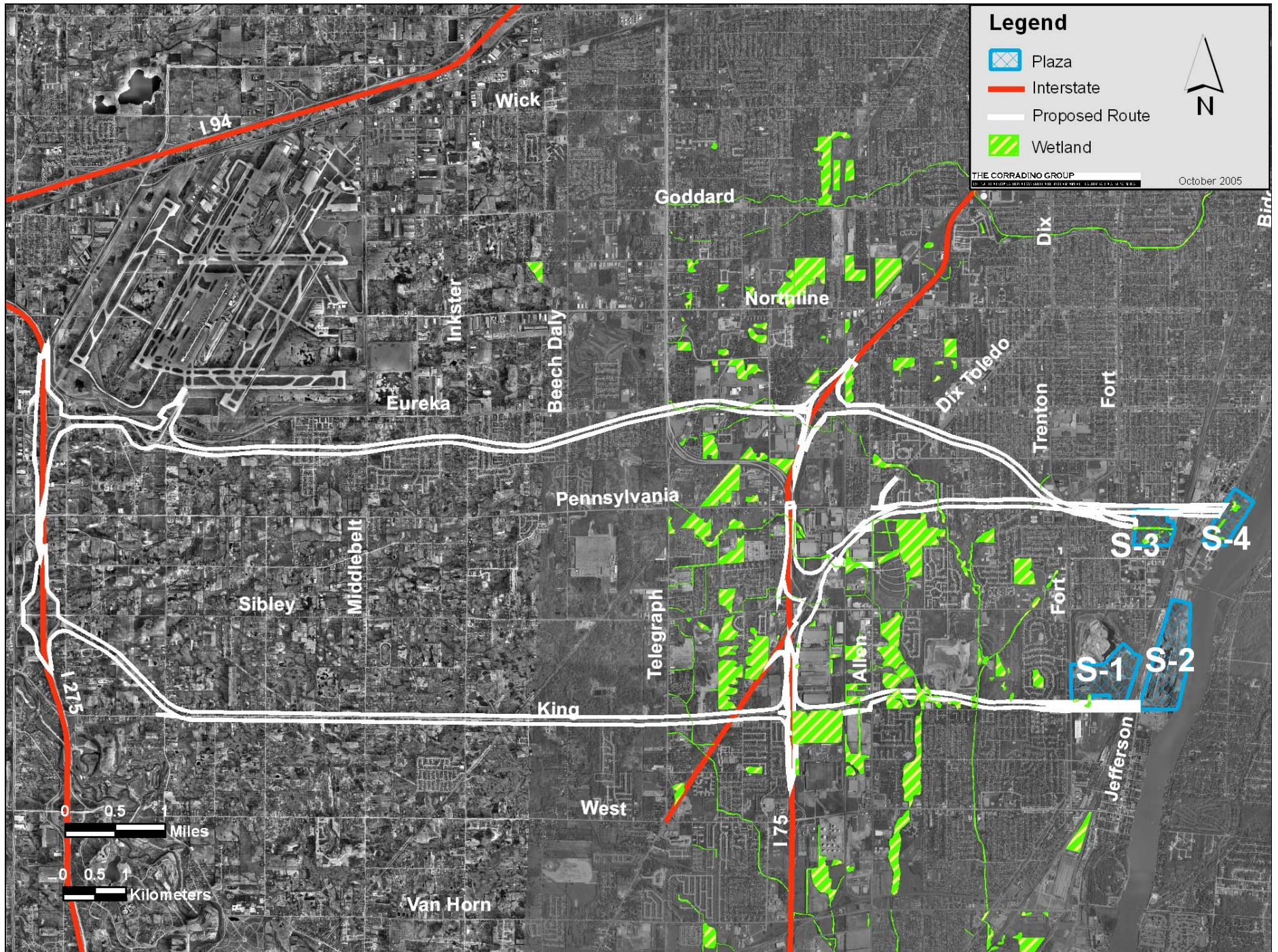


Streams and Other Water Crossings
N-1

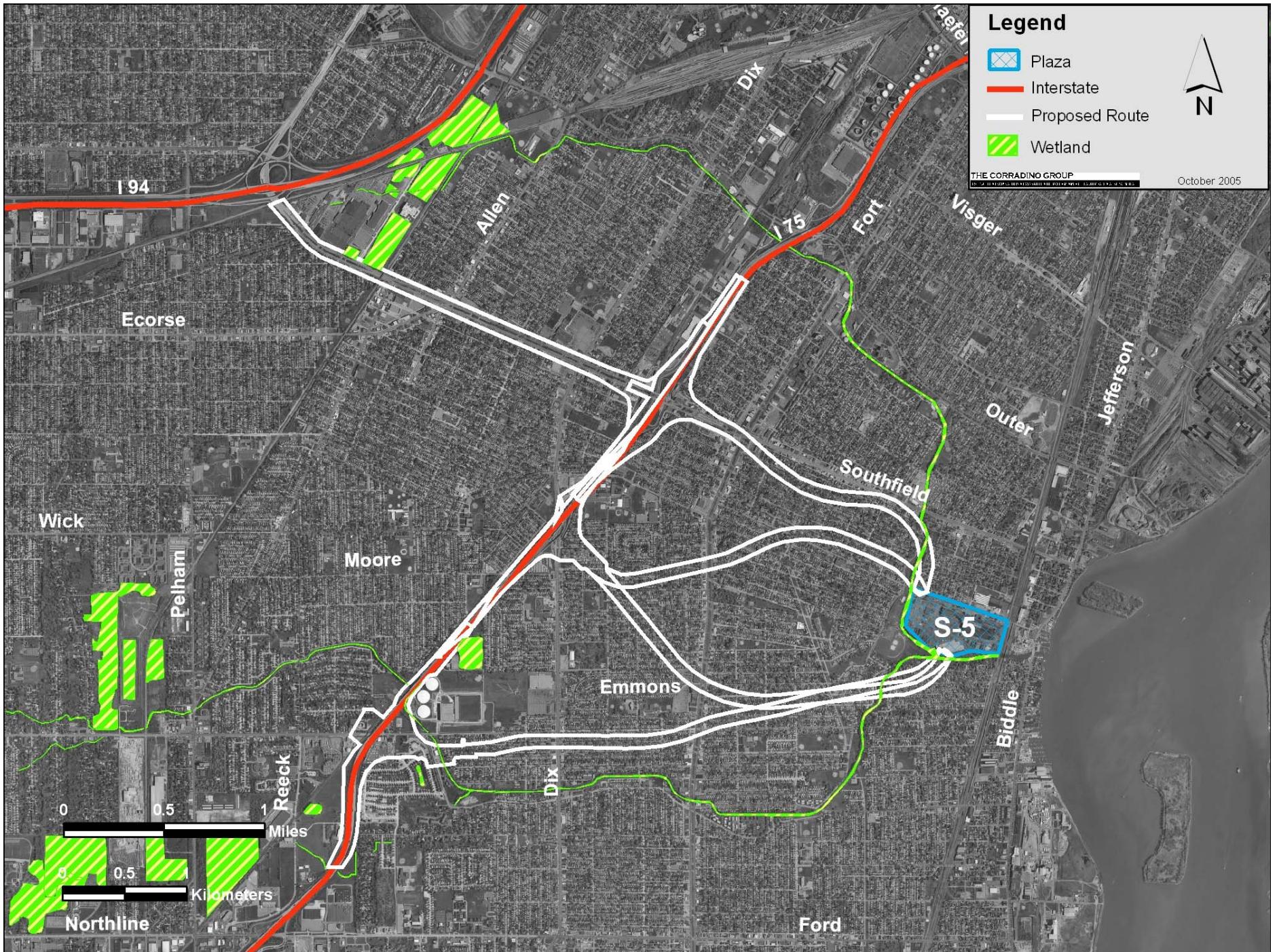


Wetlands

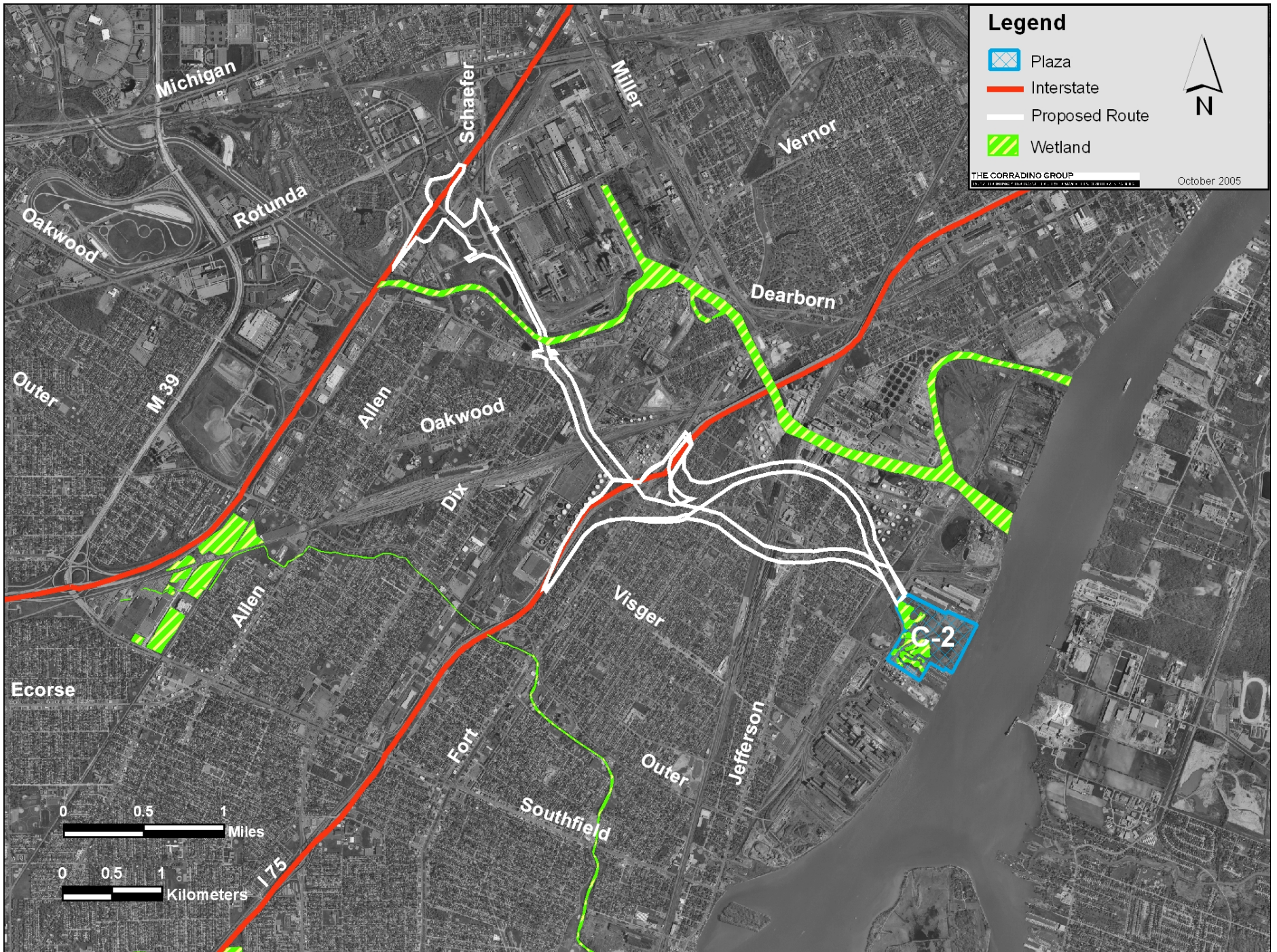
Wetlands S-1 through S-4



Wetlands S-5



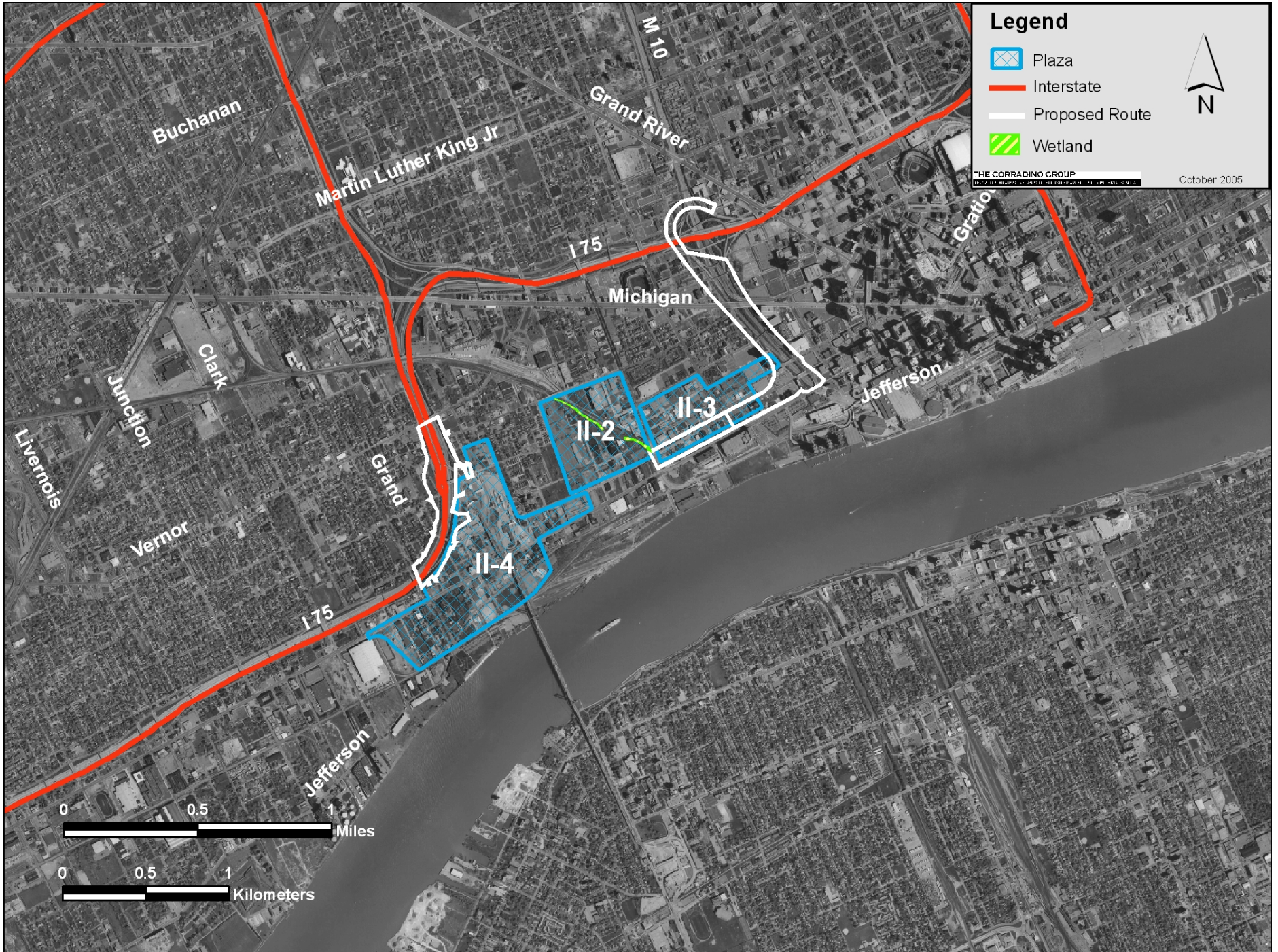
Wetlands C-2



Wetlands C-3 and C-4



Wetlands II-2 through II-4



Wetlands
N-1

No wetlands found on this map



Endangered Species

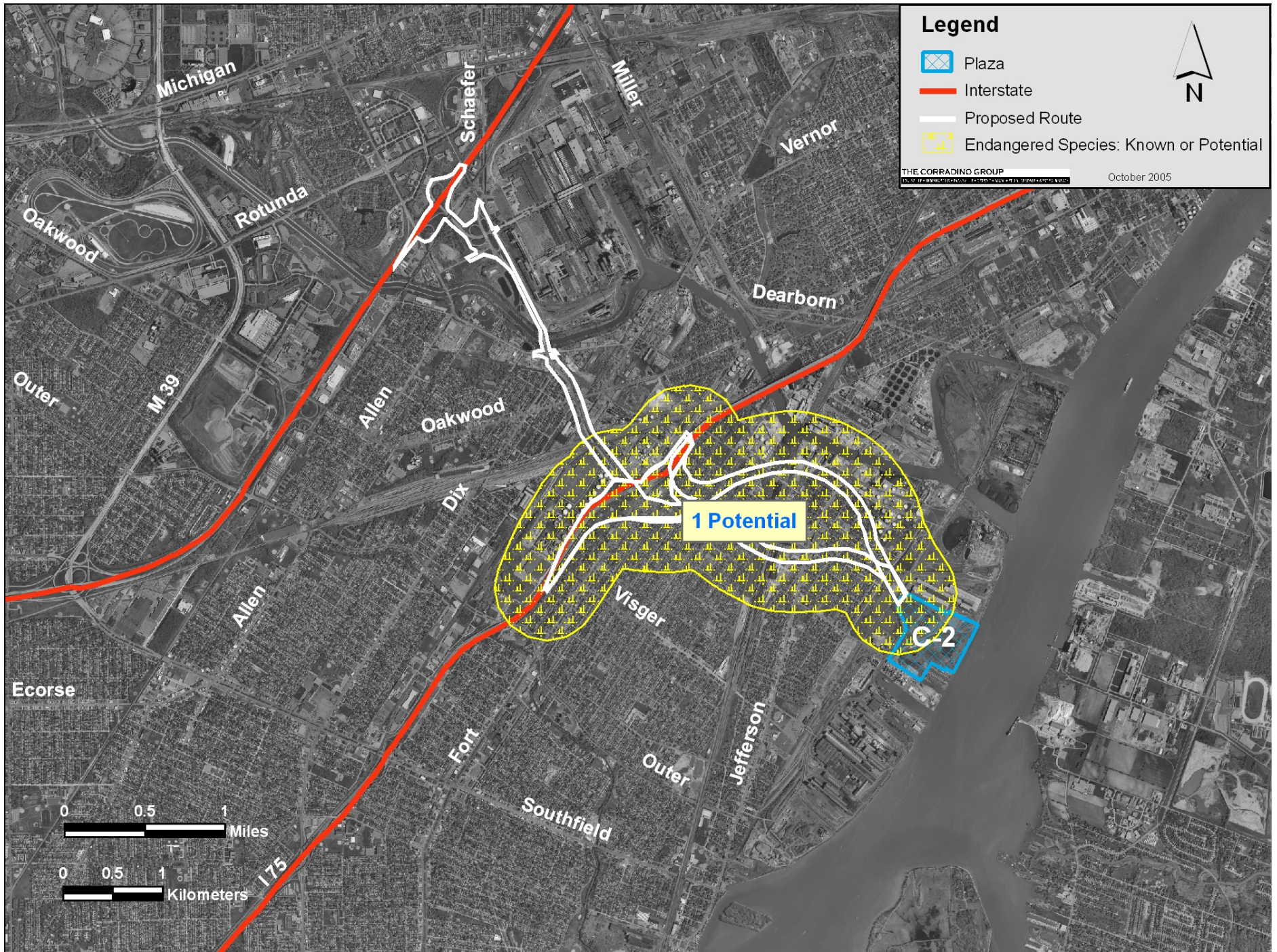
Endangered Species
S-1 through S-4



Endangered Species S-5



Endangered Species C-2



Endangered Species C-3 and C-4



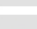

No Endangered Species Associated with this map



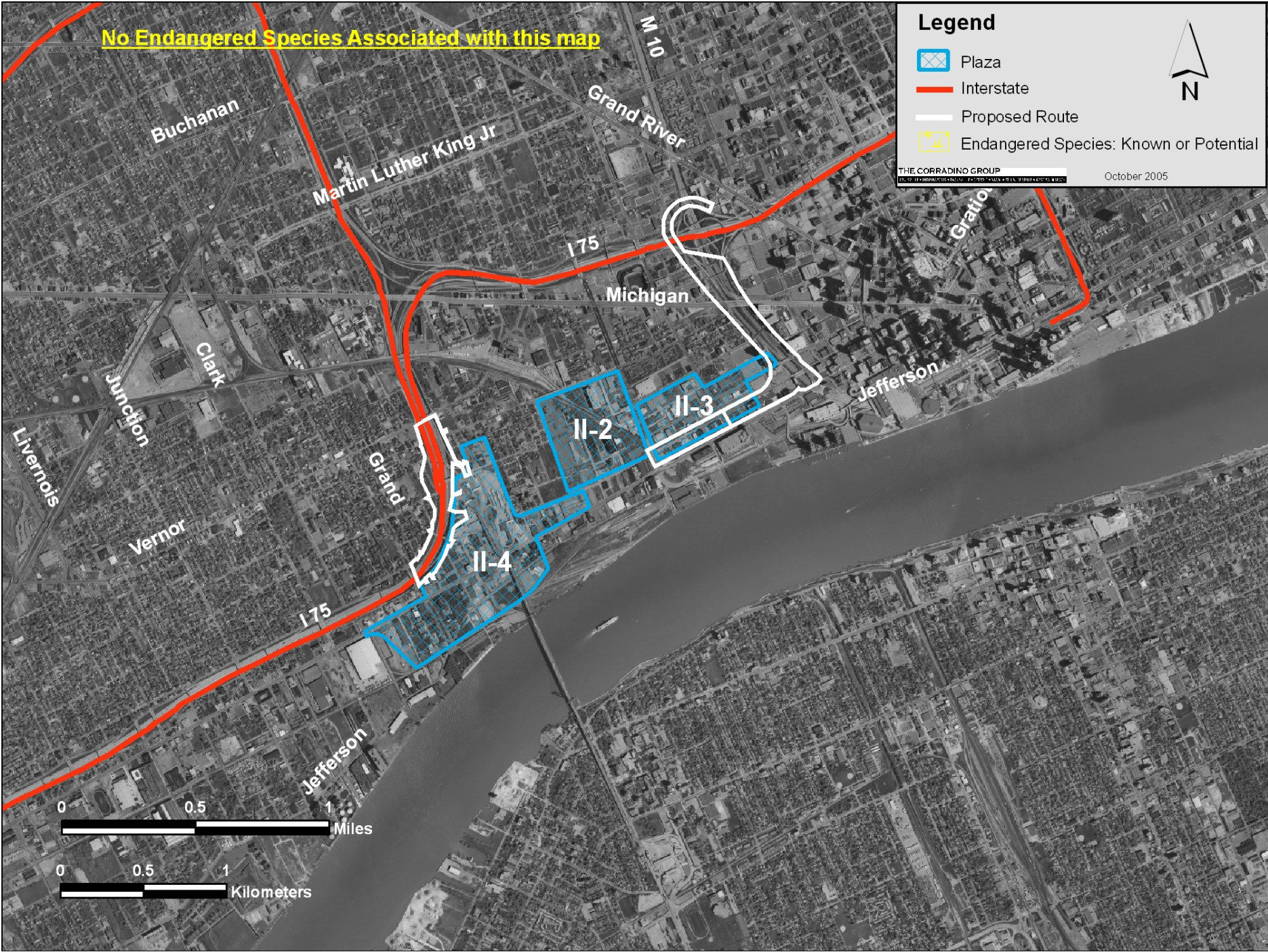

Endangered Species
II-2 through II-4

No Endangered Species Associated with this map

Legend

-  Plaza
-  Interstate
-  Proposed Route
-  Endangered Species: Known or Potential

THE CORRADINO GROUP
1000 EAST WASHINGTON STREET, SUITE 200, CHICAGO, IL 60601
October 2005



Endangered Species N-1



Legend

Color Legend
Known to occur within/near route/interchange
Some potential to occur within route/interchange
Not expected to occur within route/interchange

Scientific Name	Common Name	Last Observed Date	Federal Status	State Status	Element Category	Town	Range	Section
Route S1/S2 Schaefer to I-75								
<i>Clemmys guttata</i>	Spotted Turtle	1997-06-04		T	Animal	03S	11E	21
<i>Elaphe vulpina gloydi</i>	Eastern Fox Snake	1994		T	Animal	04S	11E	28
<i>Myotis sodalis</i>	Indiana Bat or Indiana Myotis	1865	LE	E	Animal	04S	11E	17
Route S1/S2 Schaefer I-75 to I-275								
<i>Angelica venenosa</i>	Hairy Angelica	2000-09-08		SC	Plant	04S	10E	7
<i>Aristida longespica</i>	Three-awned Grass	2001-09		T	Plant	03S	09E	26
<i>Asclepias hirtella</i>	Tall Green Milkweed	1991-07-22		T	Plant	04S	10E	8
<i>Asclepias sullivantii</i>	Sullivant's Milkweed	1994-09-08		T	Plant	04S	10E	17
<i>Clemmys guttata</i>	Spotted Turtle	1997-06-04		T	Animal	03S	11E	21
<i>Elaphe vulpina gloydi</i>	Eastern Fox Snake	1994		T	Animal	04S	11E	28
<i>Euonymus atropurpurea</i>	Wahoo	2003-09-11		SC	Plant	04S	09E	16
<i>Euphorbia communta</i> **		NA		T	Plant			
<i>Euphyes dukesi</i>	Dukes' Skipper	2004-07-09		T	Animal	04S	10E	7
<i>Hypericum gentianoides</i>	Gentian-leaved St. John's-wort	1994-09-27		SC	Plant	04S	10E	17
<i>Juncus brachycarpus</i>	Short-fruited Rush	2001-09		T	Plant	03S	09E	26
<i>Juncus vaseyi</i>	Vasey's Rush	1991-07-26		T	Plant	04S	10E	8
<i>Lakeplain oak openings</i>		1994-06-28			Community	04S	10E	17
<i>Lakeplain wet prairie</i>	Alkaline Wet Prairie, Midwest Type	1991-09-05			Community	04S	10E	8
<i>Lakeplain wet-mesic prairie</i>	Alkaline Tallgrass Prairie, Midwest Type	1994-06-28			Community	04S	10E	17
<i>Ludwigia alternifolia</i>	Seedbox	1998-07-01		SC	Plant	03S	09E	27
<i>Luecospora multifida</i> **				SC	Plant			

Scientific Name	Common Name	Last Observed Date	Federal Status	State Status	Element Category	Town	Range	Section
<i>Lycopodiella margueritae</i> **	Northern Prostrate Clubmoss	1991-09-05		T	Plant	04S	10E	8
<i>Lycopodiella subappressum</i> **	Northern Prostrate Clubmoss	1991-09-05		SC	Plant	04S	10E	8
<i>Myotis sodalis</i>	Indiana Bat or Indiana Myotis	1865	LE	E	Animal	04S	11E	17
<i>Polygala cruciata</i>	Cross-leaved Milkwort	1991-07-26		SC	Plant	04S	10E	8
<i>Rotala ramosior</i>	Tooth-cup	1991-07-04		SC	Plant	04S	10E	8
<i>Scirpus clintonii</i>	Clinton's Bulrush	1994-08-24		SC	Plant	04S	10E	17
<i>Scleria triglomerata</i>	Tall Nut-rush	1991-09-05		SC	Plant	04S	10E	8
Route S3 Eureka to I-75								
<i>Elaphe vulpina gloydi</i>	Eastern Fox Snake	1994		T	Animal	04S	11E	28
<i>Myotis sodalis</i>	Indiana Bat or Indiana Myotis	1865	LE	E	Animal	04S	11E	17
Route S3 Eureka I-75 to I-275								
<i>Angelica venenosa</i>	Hairy Angelica	2000-09-08		SC	Plant	04S	10E	7
<i>Aristida longespica</i>	Three-awned Grass	2001-09		T	Plant	03S	09E	26
<i>Asclepias hirtella</i>	Tall Green Milkweed	1991-07-22		T	Plant	04S	10E	8
<i>Asclepias sullivantii</i>	Sullivant's Milkweed	1994-09-08		T	Plant	04S	10E	17
<i>Clemmys guttata</i>	Spotted Turtle	1997-06-04		T	Animal	03S	11E	21
<i>Elaphe vulpina gloydi</i>	Eastern Fox Snake	1994		T	Animal	04S	11E	28
<i>Euphorbia communta</i> **		NA		T	Plant			
<i>Hypericum gentianoides</i>	Gentian-leaved St. John's-wort	1994-09-27		SC	Plant	04S	10E	17
<i>Juncus brachycarpus</i>	Short-fruited Rush	2001-09		T	Plant	03S	09E	26
<i>Juncus vaseyi</i>	Vasey's Rush	1991-07-26		T	Plant	04S	10E	8
<i>Lakeplain wet prairie</i>	Alkaline Wet Prairie, Midwest Type	1991-09-05			Community	04S	10E	8
<i>Lakeplain wet-mesic prairie</i>	Alkaline Tallgrass Prairie, Midwest Type	1994-06-28			Community	04S	10E	17
<i>Ludwigia alternifolia</i>	Seedbox	1998-07-01		SC	Plant	03S	09E	27
<i>Luecospora multifida</i> **				SC	Plant			
<i>Lycopodiella margueritae</i> **				T	Plant			
<i>Lycopodiella subappressum</i> **				SC	Plant			
<i>Myotis sodalis</i>	Indiana Bat or Indiana Myotis	1865	LE	E	Animal	04S	11E	17

Scientific Name	Common Name	Last Observed Date	Federal Status	State Status	Element Category	Town	Range	Section
<i>Polygala cruciata</i>	Cross-leaved Milkwort	1991-07-26		SC	Plant	04S	10E	8
<i>Rotala ramosior</i>	Tooth-cup	1991-07-04		SC	Plant	04S	10E	8
<i>Scirpus clintonii</i>	Clinton's Bulrush	1994-08-24		SC	Plant	04S	10E	17
<i>Scleria triglomerata</i>	Tall Nut-rush	1991-09-05		SC	Plant	04S	10E	8
Route S4 Eureka to I-75								
<i>Elaphe vulpina gloydi</i>	Eastern Fox Snake	1994		T	Animal	04S	11E	28
<i>Myotis sodalis</i>	Indiana Bat or Indiana Myotis	1865	LE	E	Animal	04S	11E	17
Route S4 Eureka I-75 to I-275								
<i>Angelica venenosa</i>	Hairy Angelica	2000-09-08		SC	Plant	04S	10E	7
<i>Aristida longespica</i>	Three-awned Grass	2001-09		T	Plant	03S	09E	26
<i>Asclepias hirtella</i>	Tall Green Milkweed	1991-07-22		T	Plant	04S	10E	8
<i>Asclepias sullivantii</i>	Sullivant's Milkweed	1994-09-08		T	Plant	04S	10E	17
<i>Clemmys guttata</i>	Spotted Turtle	1997-06-04		T	Animal	03S	11E	21
<i>Elaphe vulpina gloydi</i>	Eastern Fox Snake	1994		T	Animal	04S	11E	28
<i>Euphorbia communta</i> **		NA		T	Plant			
<i>Hypericum gentianoides</i>	Gentian-leaved St. John's-wort	1994-09-27		SC	Plant	04S	10E	17
<i>Juncus brachycarpus</i>	Short-fruited Rush	2001-09		T	Plant	03S	09E	26
<i>Juncus vaseyi</i>	Vasey's Rush	1991-07-26		T	Plant	04S	10E	8
<i>Lakeplain wet prairie</i>	Alkaline Wet Prairie, Midwest Type	1991-09-05			Community	04S	10E	8
<i>Lakeplain wet-mesic prairie</i>	Alkaline Tallgrass Prairie, Midwest Type	1994-06-28			Community	04S	10E	17
<i>Ludwigia alternifolia</i>	Seedbox	1998-07-01		SC	Plant	03S	09E	27
<i>Luecospora multifida</i> **				SC	Plant			
<i>Lycopodiella margueritae</i> **				T	Plant			
<i>Lycopodiella subappressum</i> **				SC	Plant			
<i>Myotis sodalis</i>	Indiana Bat or Indiana Myotis	1865	LE	E	Animal	04S	11E	17
<i>Polygala cruciata</i>	Cross-leaved Milkwort	1991-07-26		SC	Plant	04S	10E	8
<i>Rotala ramosior</i>	Tooth-cup	1991-07-04		SC	Plant	04S	10E	8
<i>Scirpus clintonii</i>	Clinton's Bulrush	1994-08-24		SC	Plant	04S	10E	17
<i>Scleria triglomerata</i>	Tall Nut-rush	1991-09-05		SC	Plant	04S	10E	8

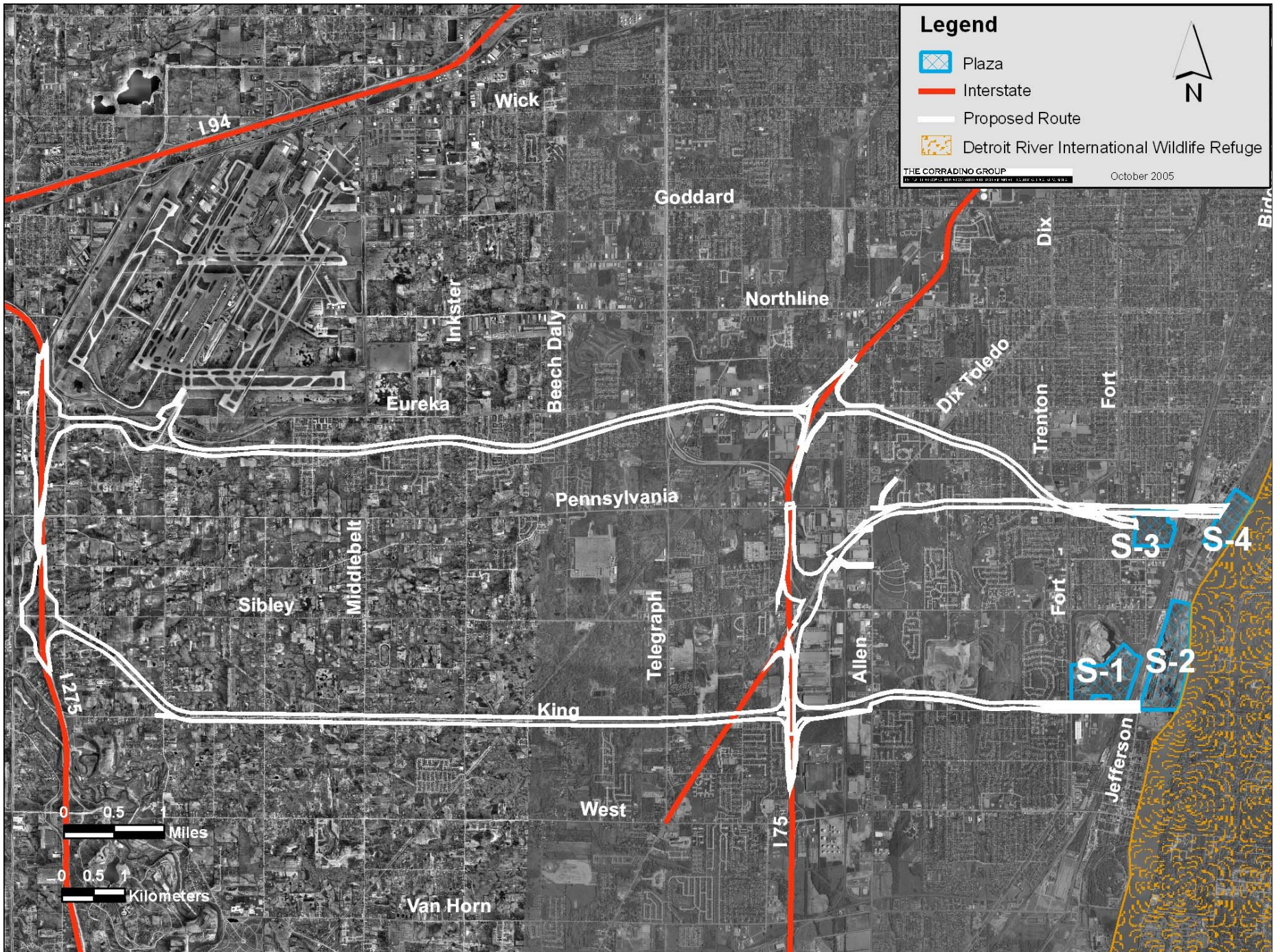
Scientific Name	Common Name	Last Observed Date	Federal Status	State Status	Element Category	Town	Range	Section
Route S5 Moran to I-75								
<i>Elaphe vulpina gloydi</i>	Eastern Fox Snake	1994		T	Animal	04S	11E	28
Route S5 Dix to I-75 (South)								
<i>Elaphe vulpina gloydi</i>	Eastern Fox Snake	1994		T	Animal	04S	11E	28
Route S5 Dix to I-75 (North)								
<i>Elaphe vulpina gloydi</i>	Eastern Fox Snake	1994		T	Animal	04S	11E	28
Route S5 Southfield to I-75								
<i>Elaphe vulpina gloydi</i>	Eastern Fox Snake	1994		T	Animal	04S	11E	28
Route S5 Southfield I-75 to I-94								
<i>Elaphe vulpina gloydi</i>	Eastern Fox Snake	1994		T	Animal	04S	11E	28
Route C2 Schaefer to I-75 (South)								
<i>Falco peregrinus</i>	Peregrine Falcon	2004-03-10	PS:LE	E	Animal	02S	11E	35
Route C2 Schaefer I-75 to I-94 (South)								
<i>Falco peregrinus</i>	Peregrine Falcon	2004-03-10	PS:LE	E	Animal	02S	11E	35
Route C2 Schaefer to I-75 (North)								
<i>Falco peregrinus</i>	Peregrine Falcon	2004-03-10	PS:LE	E	Animal	02S	11E	35
Route C2 Schaefer I-75 to I-94 (North)								
<i>Falco peregrinus</i>	Peregrine Falcon	2004-03-10	PS:LE	E	Animal	02S	11E	35
Route N1 St. Jean to I-94								
<i>Falco peregrinus</i>	Peregrine Falcon	2004-03-10	PS:LE	E	Animal	02S	12E	2
Route N1 Conner to I-94								
<i>Falco peregrinus</i>	Peregrine Falcon	2004-03-10	PS:LE	E	Animal	02S	12E	2

* Data from Michigan Natural Features Inventory.

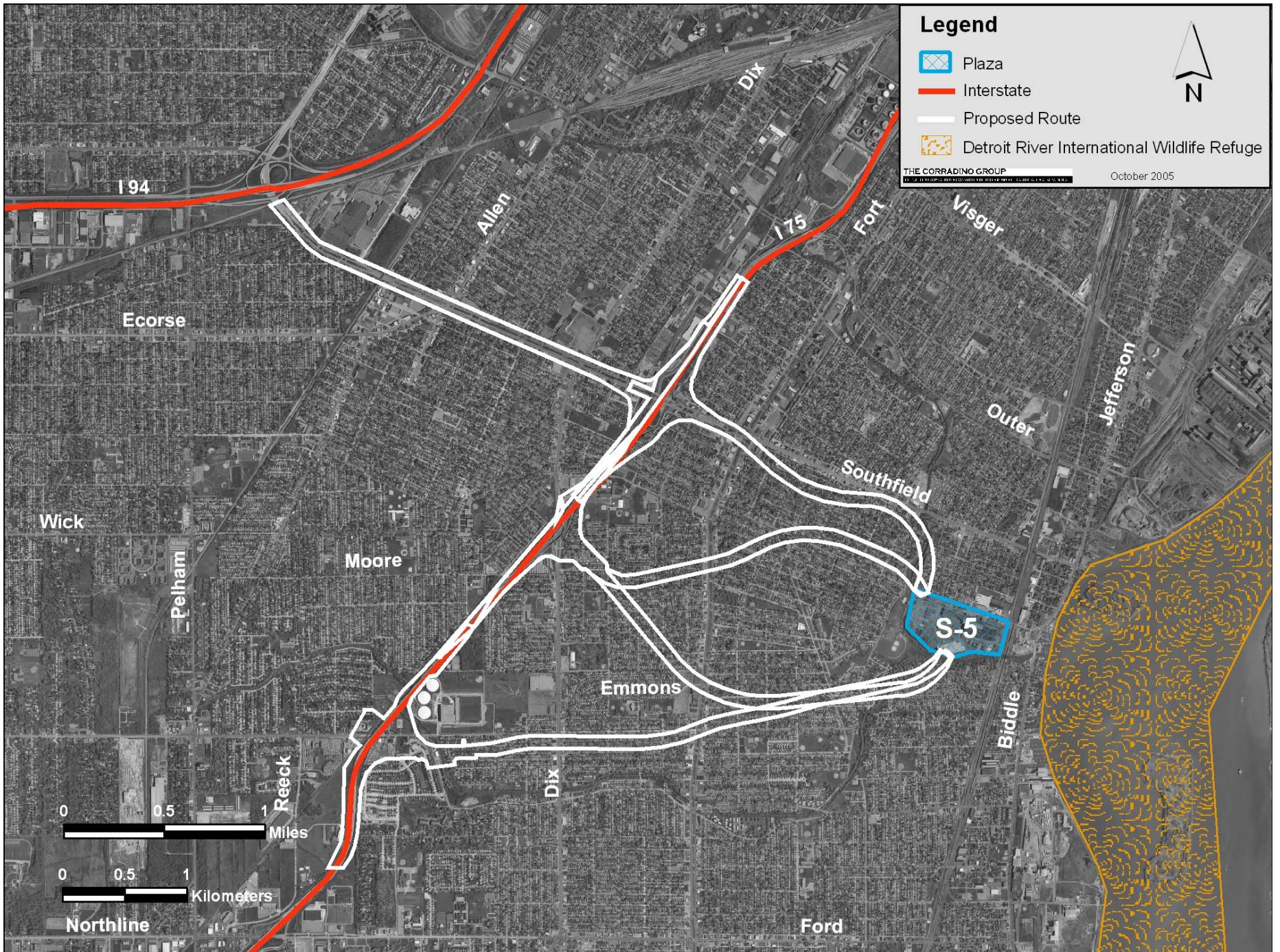
** No reported occurrence of species with MNFI but known to occur

Wildlife Refuges

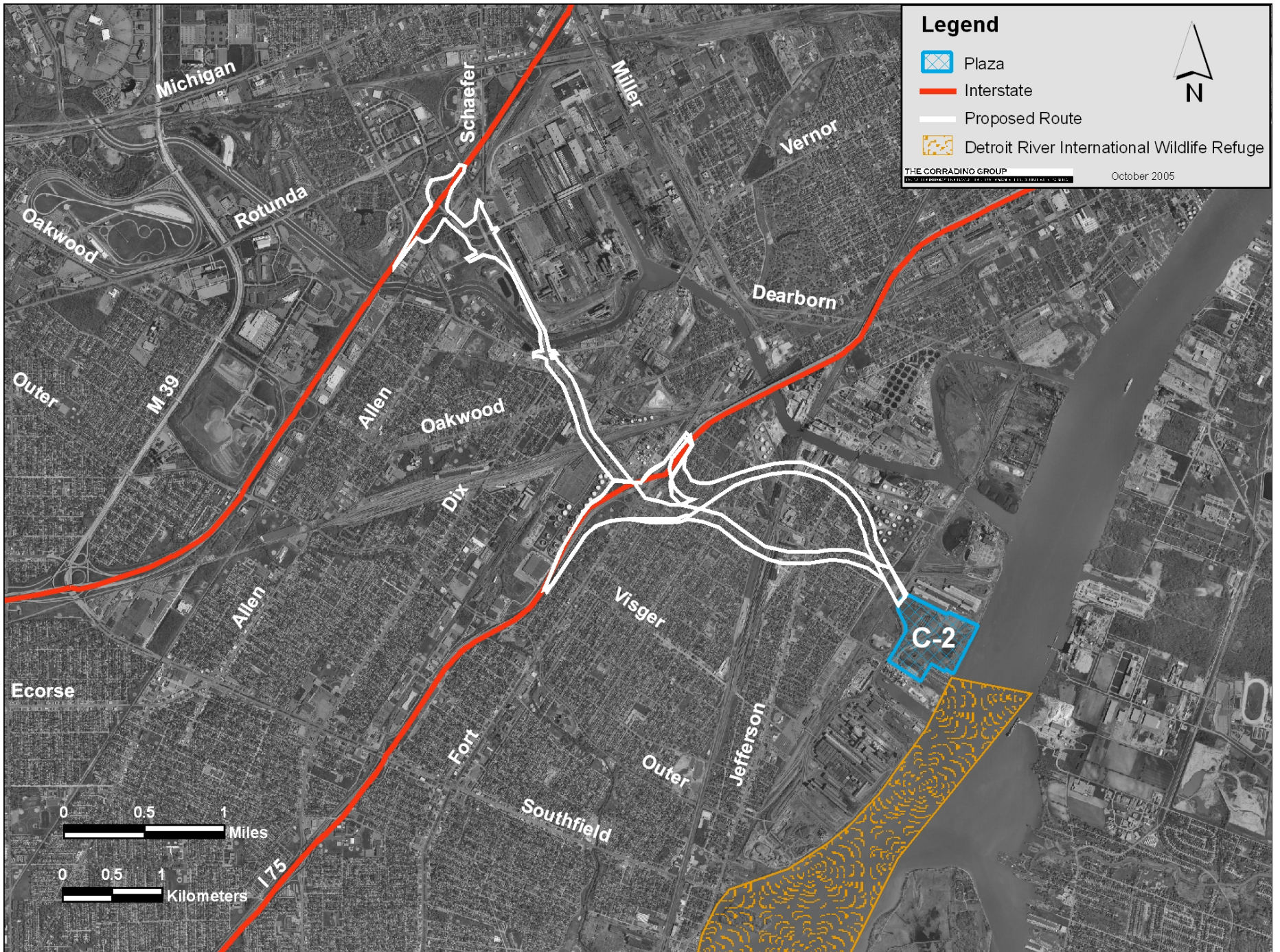
Wildlife Refuges S-1 through S-4



Wildlife Refuges S-5



Wildlife Refuges
C-2



Wildlife Refuges C-3 and C-4

No Detroit River International Wildlife Refuge found on this map



Wildlife Refuges
II-2 through II-4



Wildlife Refuges N-1

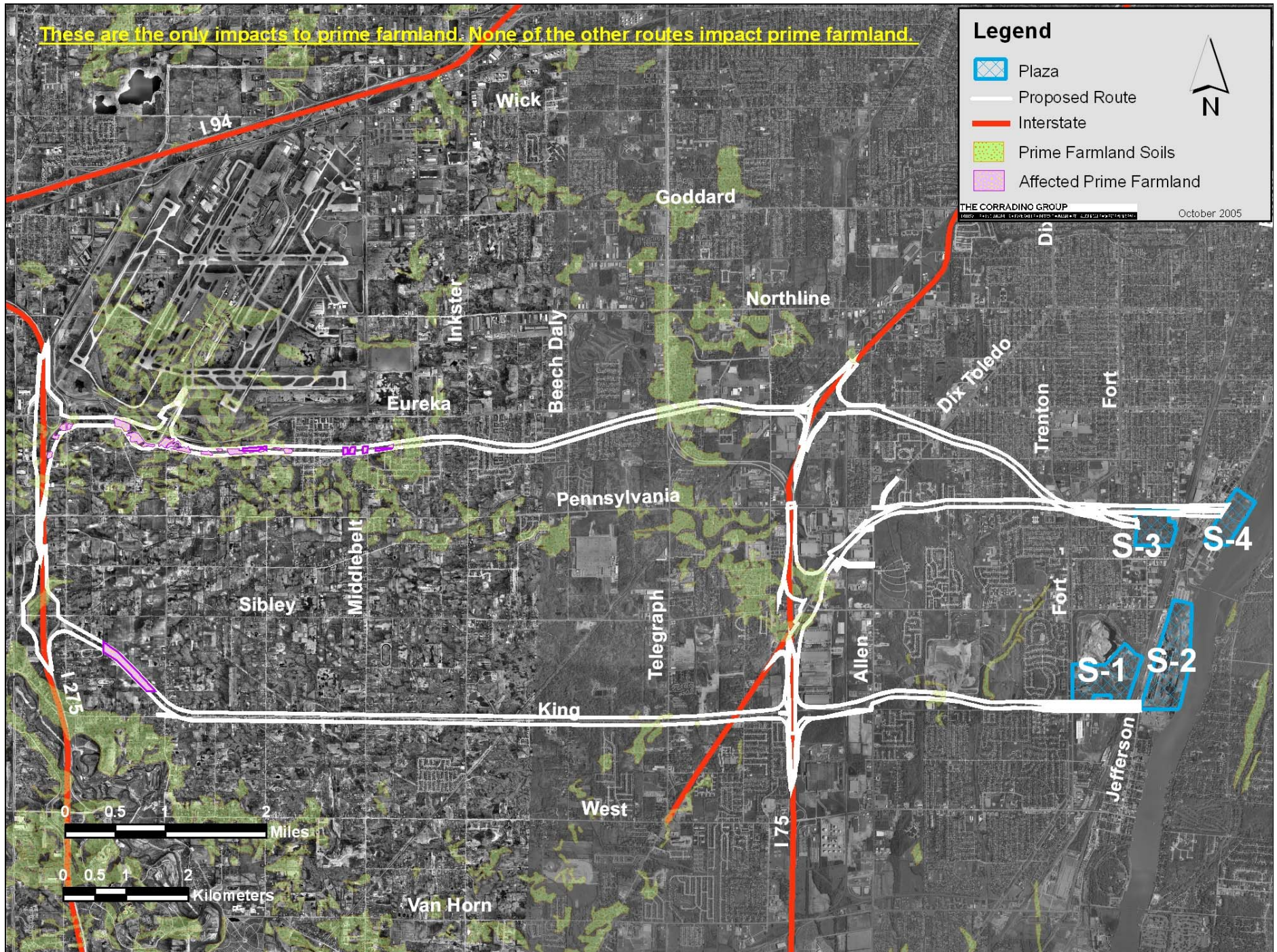
No Detroit River International Wildlife Refuge found on this map



Farmland

Farmland S-1 through S-4

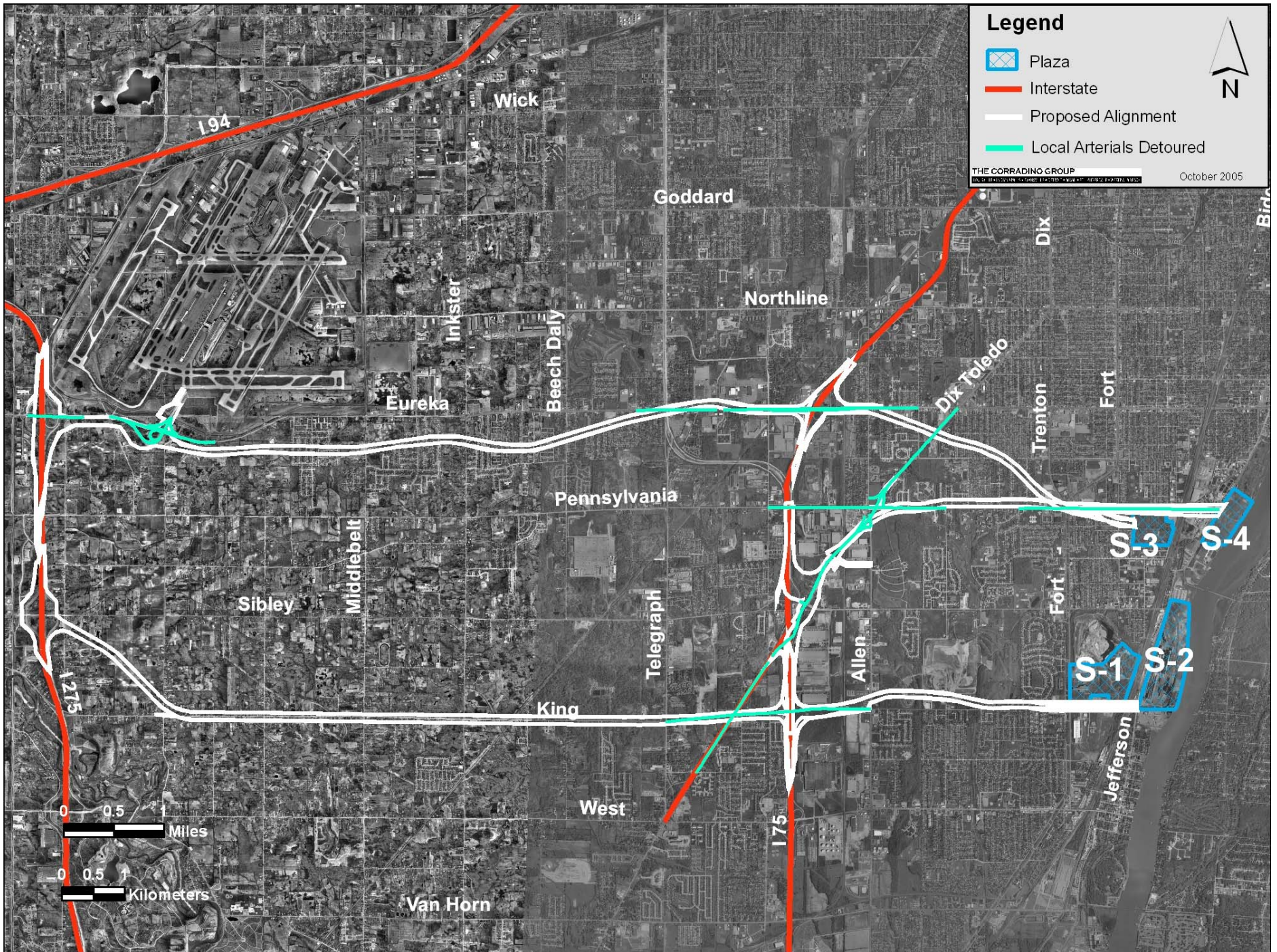
These are the only impacts to prime farmland. None of the other routes impact prime farmland.



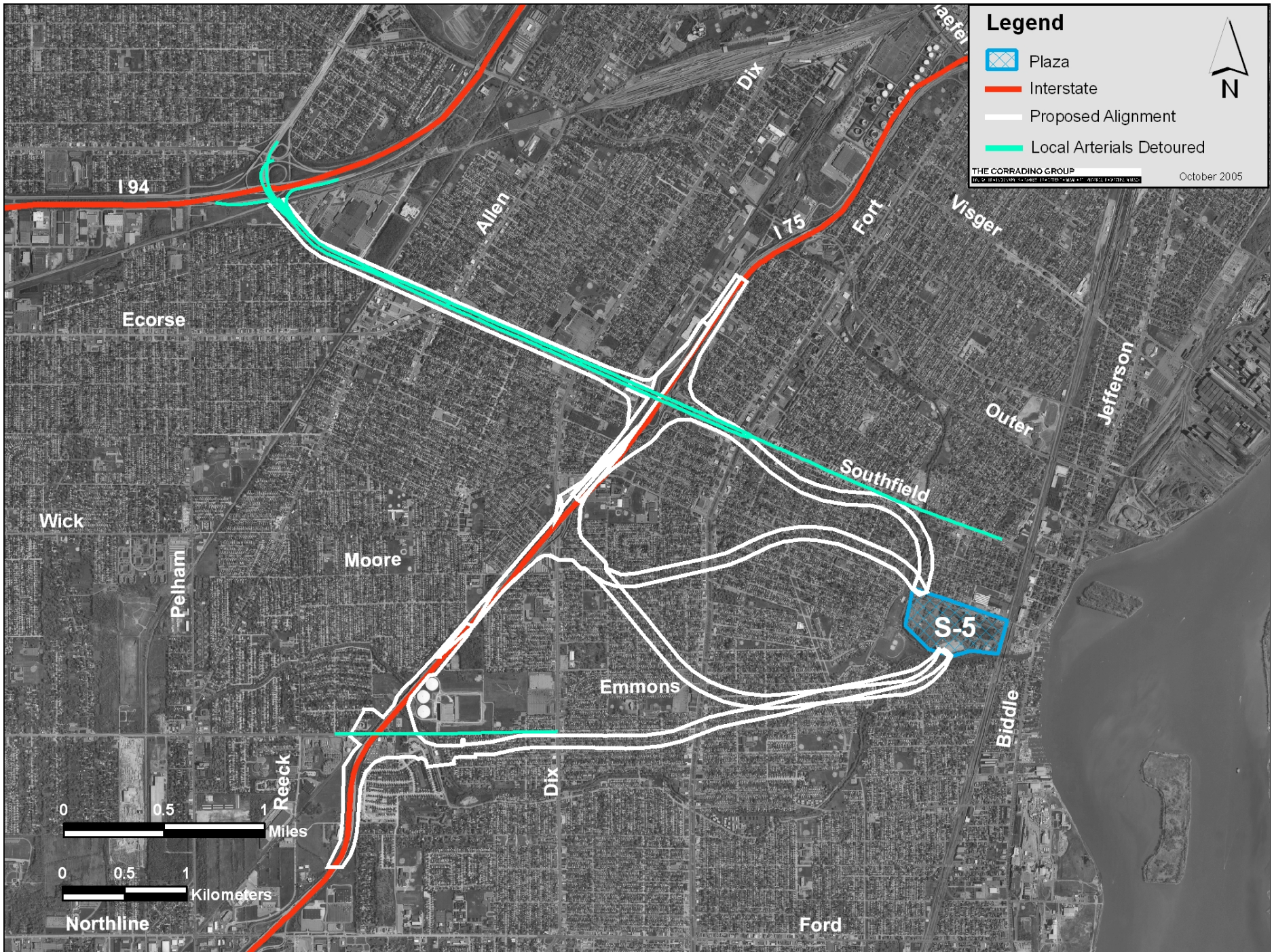
3.1.5 Improve Regional Mobility

Detour of Local Arterials

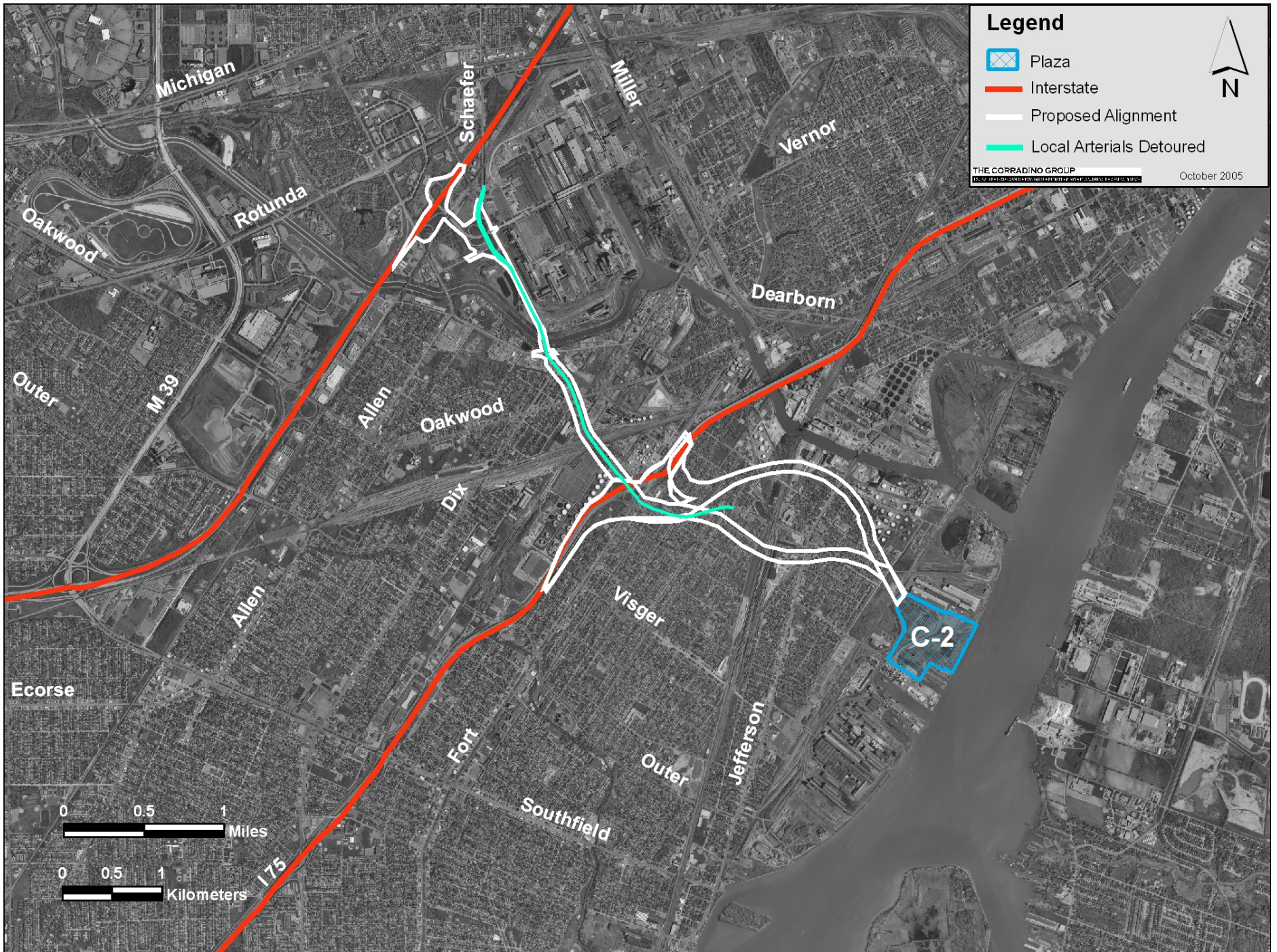
Detour of Local Arterials S-1 through S-4



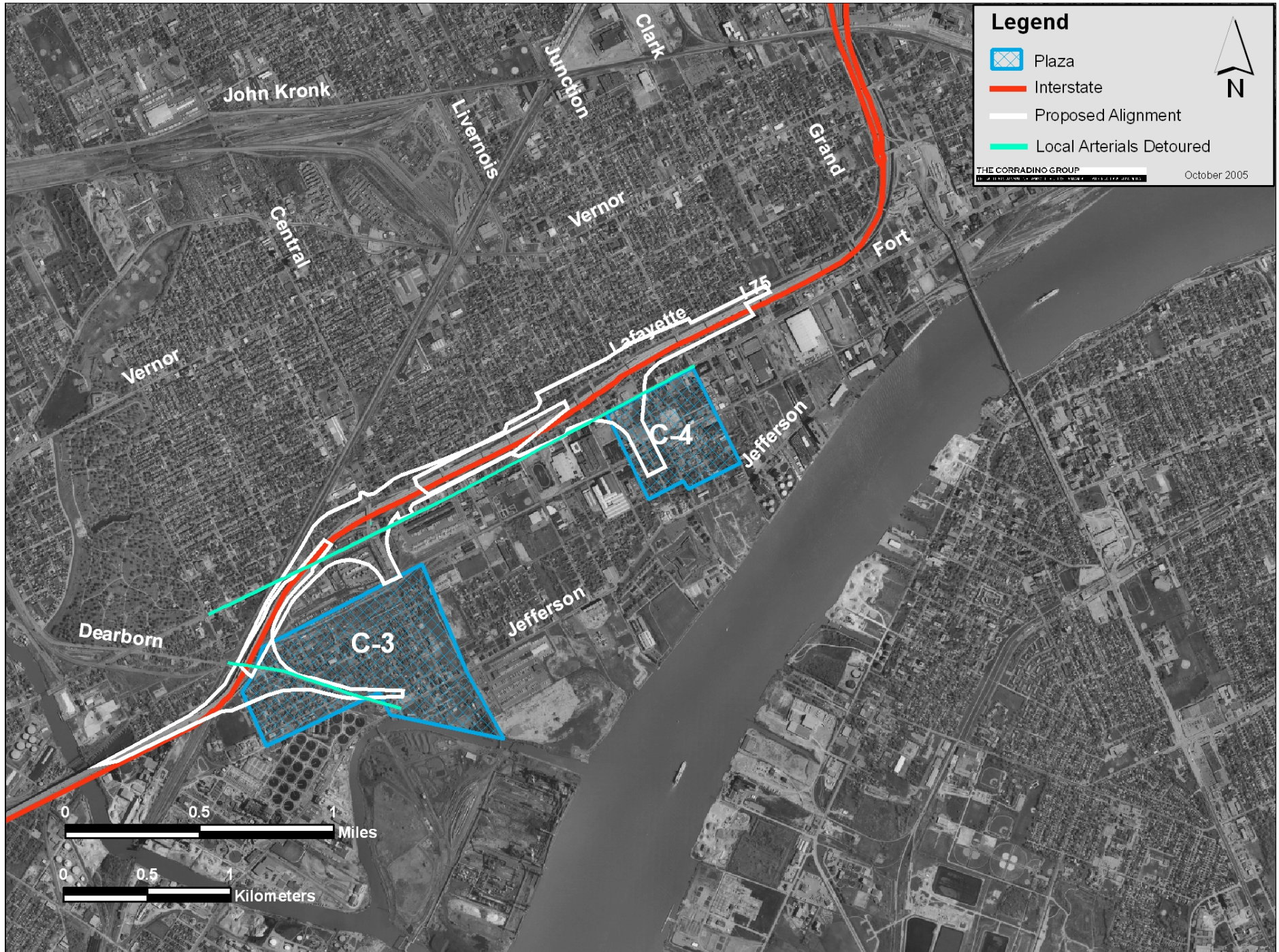
Detour of Local Arterials S-5



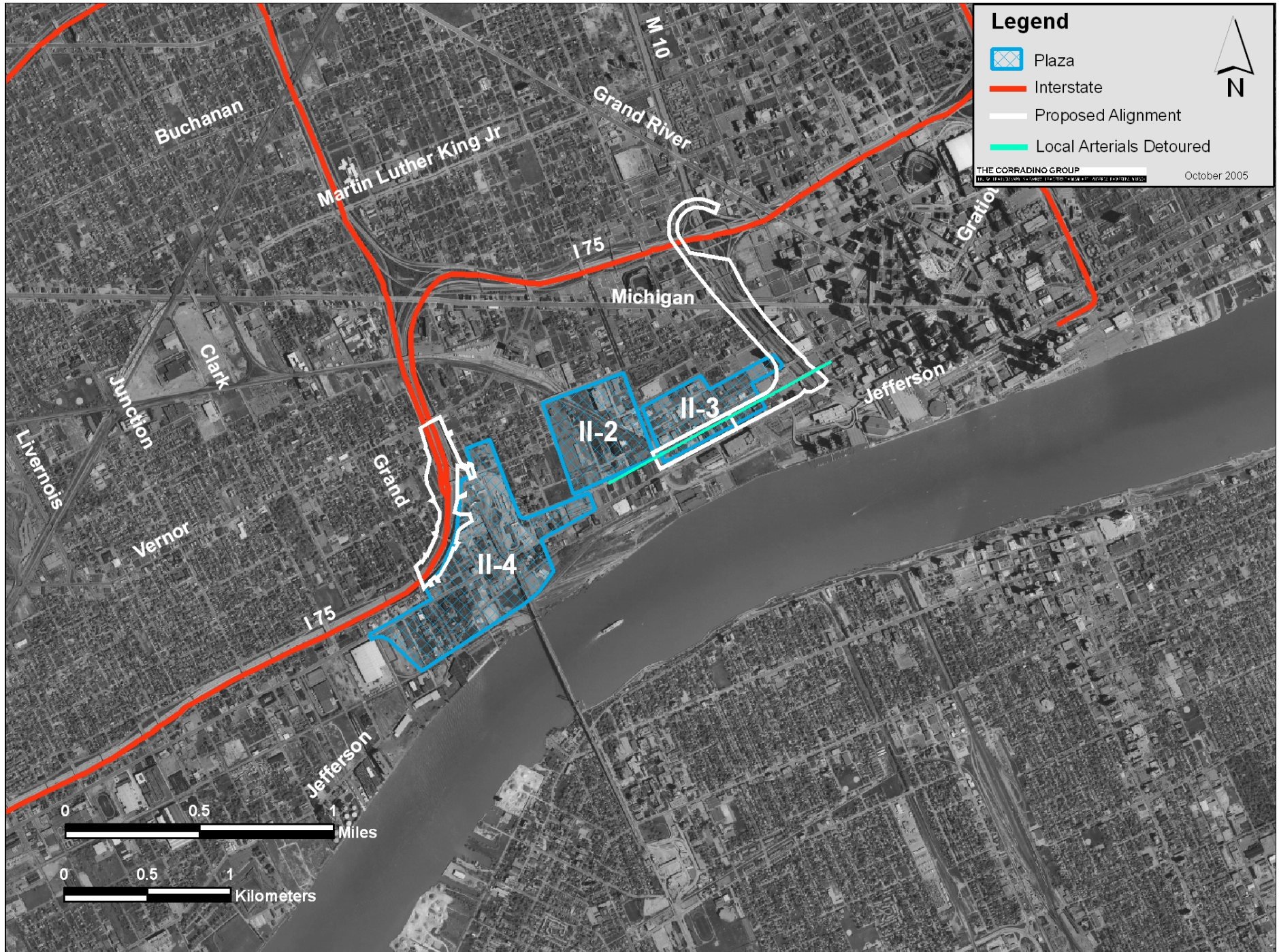
Detour of Local Arterials C-2



Detour of Local Arterials C-3 and C-4



Detour of Local Arterials II-2 through II-4



Detour of Local Arterials N-1

